

ROLLER COASTER

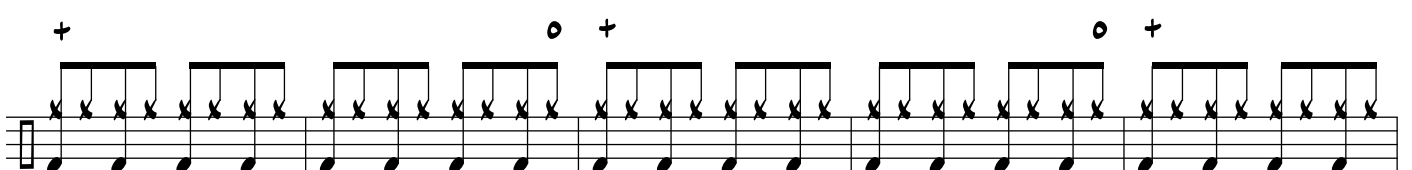
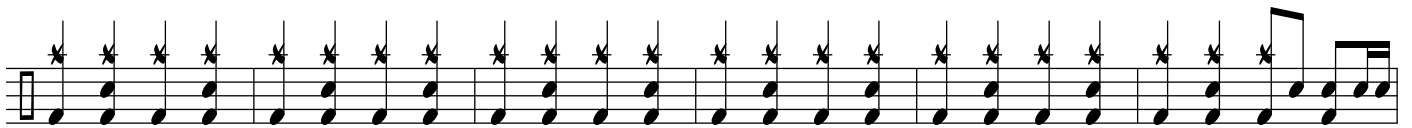
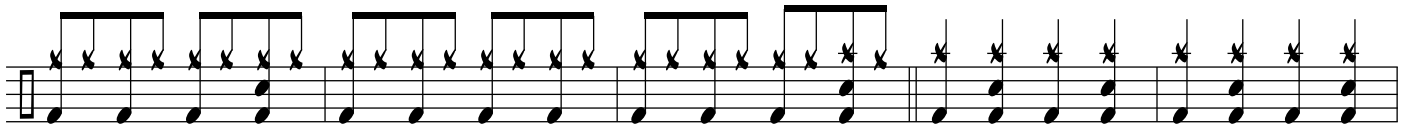
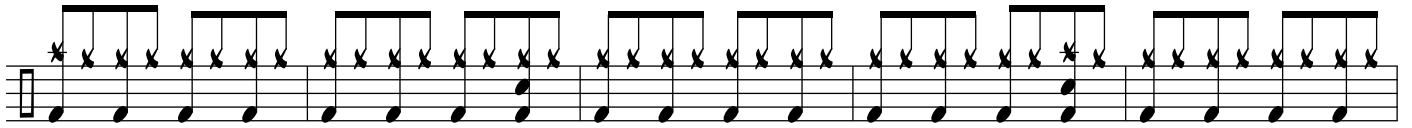
DRUM SET

The drum set notation is written on seven staves. The first staff begins with a common time signature (C) and contains two measures of rests, the first labeled '8' and the second '7'. The second staff shows a continuous eighth-note pattern. The third staff features a complex pattern with eighth-note groups and 'x' marks above them. The fourth staff continues this pattern with 'x' marks. The fifth staff has 'x' marks above eighth notes. The sixth staff has 'x' marks above eighth notes. The seventh staff concludes with a '7' measure of rest followed by eighth notes.

© ROB FERRELL DRUM STUDIO 2017

ALL RIGHTS RESERVED

WWW.ROBERTFERRELL.COM



A musical staff with a treble clef and a key signature of one flat. The staff contains a sequence of notes, many of which are marked with an asterisk (*). The notes are primarily eighth and sixteenth notes, with some beamed together. There is a double bar line in the middle of the staff.

A musical staff with a treble clef and a key signature of one flat. The staff contains a sequence of notes, many of which are marked with an asterisk (*). The notes are primarily eighth and sixteenth notes, with some beamed together. There is a double bar line at the end of the staff.

A musical staff with a treble clef and a key signature of one flat. The staff contains a sequence of notes, many of which are marked with an asterisk (*). Above the staff, there are plus signs (+) and circles (o) indicating specific notes or groups of notes. The notes are primarily eighth and sixteenth notes, with some beamed together.

A musical staff with a treble clef and a key signature of one flat. The staff contains a sequence of notes, many of which are marked with an asterisk (*). Above the staff, the word "SWELL" is written in capital letters. The notes are primarily eighth and sixteenth notes, with some beamed together. There is a double bar line at the end of the staff.