

LEAVE BEFORE THE LIGHTS COME ON

DRUM SET

Drum set notation for the song "Leave Before the Lights Come On". The notation is written on a single staff with a common time signature (C). The piece consists of 32 measures, divided into eight measures per line. The notation includes various drum patterns, rests, and specific markings such as asterisks (*) and a circled 'o' (o) above notes. The first measure is marked with a common time signature (C). The notation is as follows:

- Measures 1-4: A consistent pattern of eighth notes on the snare and bass drum, with a cymbal pattern on the hi-hat. An asterisk (*) is placed above the second measure.
- Measures 5-8: Similar pattern to measures 1-4. An asterisk (*) is placed above the sixth measure.
- Measures 9-12: Similar pattern to measures 1-4. A circled 'o' (o) is placed above the tenth measure.
- Measures 13-16: Similar pattern to measures 1-4. An asterisk (*) is placed above the fourteenth measure.
- Measures 17-20: Similar pattern to measures 1-4. An asterisk (*) is placed above the eighteenth measure.
- Measures 21-24: Similar pattern to measures 1-4. An asterisk (*) is placed above the twenty-third measure.
- Measures 25-28: Similar pattern to measures 1-4. An asterisk (*) is placed above the twenty-seventh measure.
- Measures 29-32: Similar pattern to measures 1-4. An asterisk (*) is placed above the thirty-first measure.

© ROS FERRELL DRUM STUDIO 2021

ALL RIGHTS RESERVED

WWW.ROBERTFERRELL.COM

35

40

47

51

55

60

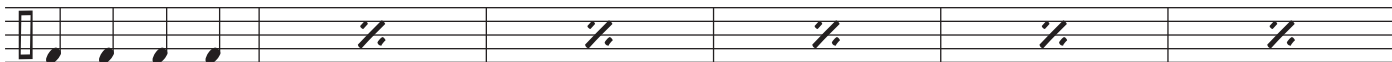
65

69

74

80

(4)



86

(8)



92



96



106



111



116



120



124



128

