

KISS ME DEADLY

DRUM SET

Drum notation for the song "Kiss Me Deadly". The notation is written on a single staff with a common time signature (C) and a tempo marking of 16. The notation consists of eight measures of music, each containing a series of rhythmic patterns. The patterns are primarily eighth notes and sixteenth notes, with some measures featuring accents (marked with an asterisk) and other markings (marked with a plus sign or a circle). The notation is presented in a simplified manner, focusing on the rhythmic structure of the drum set.

© ROS FERRELL DRUM STUDIO 2016

ALL RIGHTS RESERVED

WWW.ROBERTFERRELL.COM

A musical staff with a treble clef and a key signature of one flat. It contains a sequence of rhythmic patterns, each consisting of a group of notes with 'x' marks above them, indicating specific fingerings or techniques. The patterns are repeated across five measures.

A musical staff with a treble clef and a key signature of one flat. It contains a sequence of rhythmic patterns with 'x' marks. Above the second and fifth measures, there are circled plus signs (+) and an asterisk (*), likely indicating specific performance instructions or accents.

A musical staff with a treble clef and a key signature of one flat. It contains a sequence of rhythmic patterns with 'x' marks. Above the first measure, there is a plus sign (+), and above the fifth measure, there is an asterisk (*).

A musical staff with a treble clef and a key signature of one flat. It contains a sequence of rhythmic patterns with 'x' marks. Above the fourth and fifth measures, there are circled plus signs (+) and an asterisk (*).

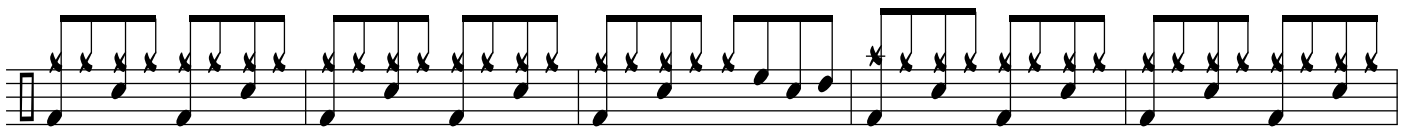
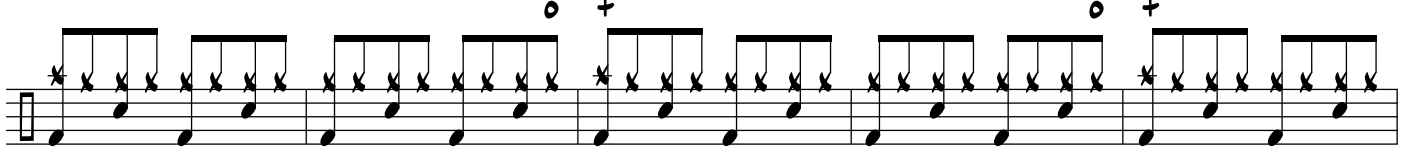
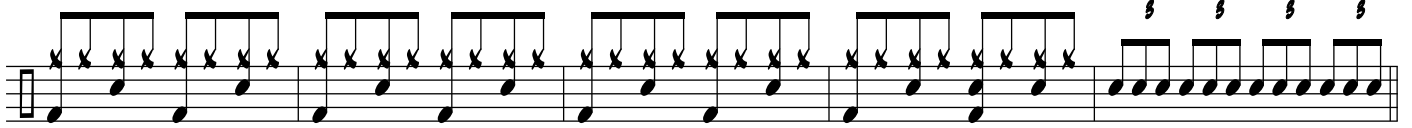
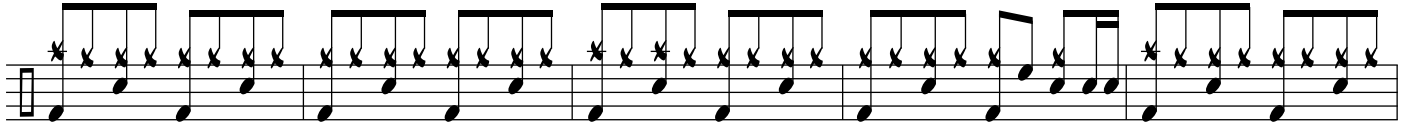
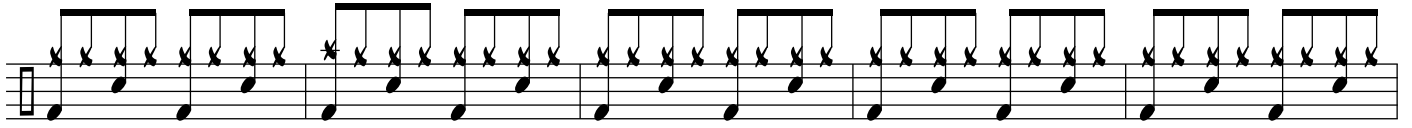
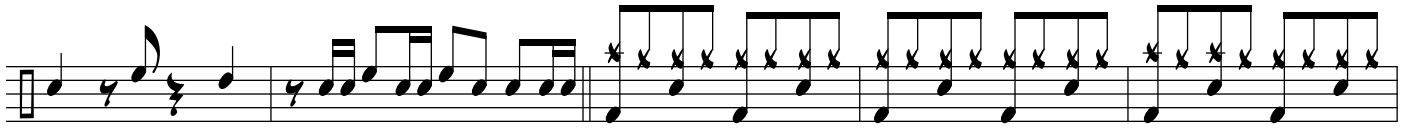
A musical staff with a treble clef and a key signature of one flat. It contains a sequence of rhythmic patterns with 'x' marks. Above the third and fourth measures, there are circled plus signs (+) and an asterisk (*).

A musical staff with a treble clef and a key signature of one flat. It contains a sequence of rhythmic patterns with 'x' marks. Above the first and second measures, there are circled plus signs (+) and an asterisk (*).

A musical staff with a treble clef and a key signature of one flat. It contains a sequence of rhythmic patterns with 'x' marks. The staff ends with a double bar line and repeat dots.

A musical staff with a treble clef and a key signature of one flat. It contains a sequence of rhythmic patterns with 'x' marks. The staff concludes with a first ending (marked '1') and a second ending (marked '2').

A musical staff with a treble clef and a key signature of one flat. It begins with a double bar line and a '2' below it. This is followed by a sequence of rhythmic patterns with 'x' marks. The text 'REPEAT 6x' is written above the staff. The staff ends with a double bar line and repeat dots.



FADE

