

# HEADLONG FLIGHT

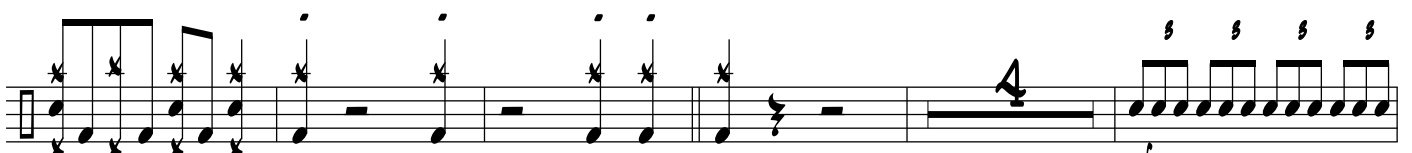
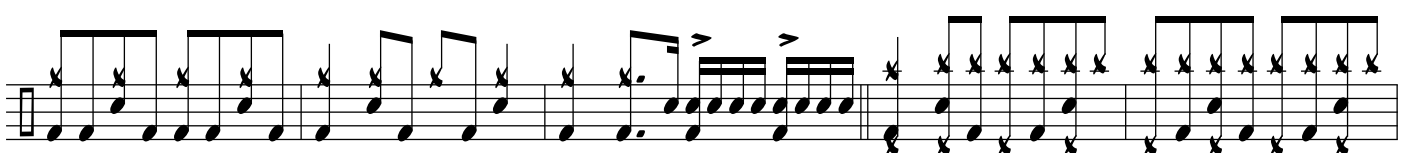
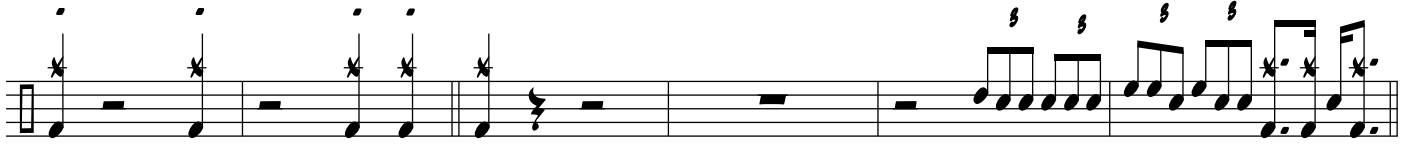
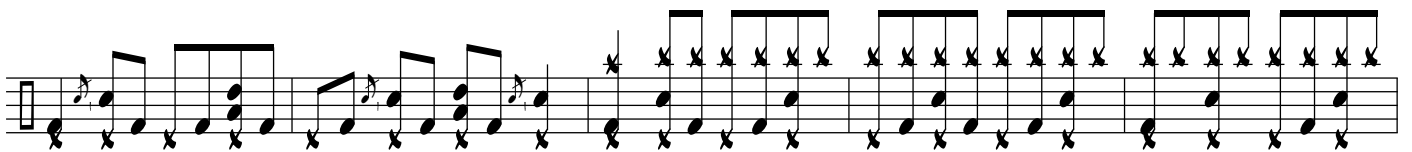
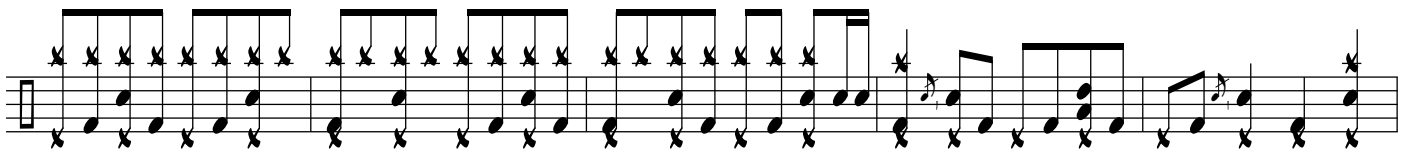
DRUM SET

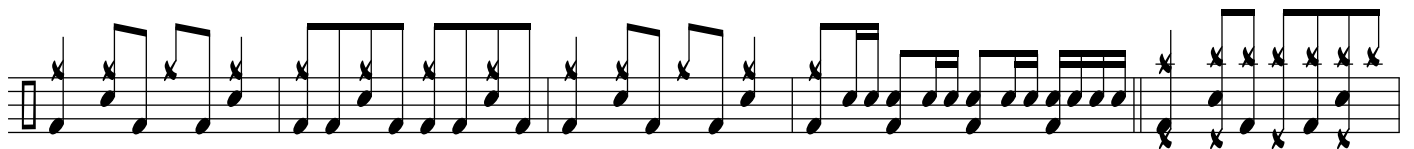
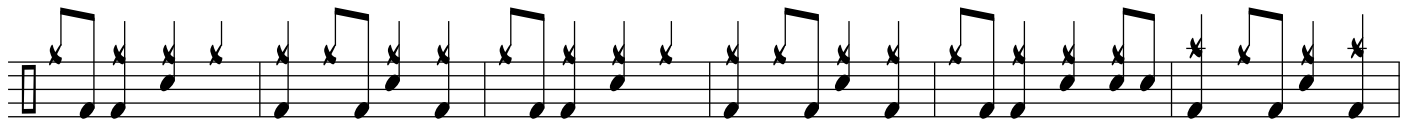
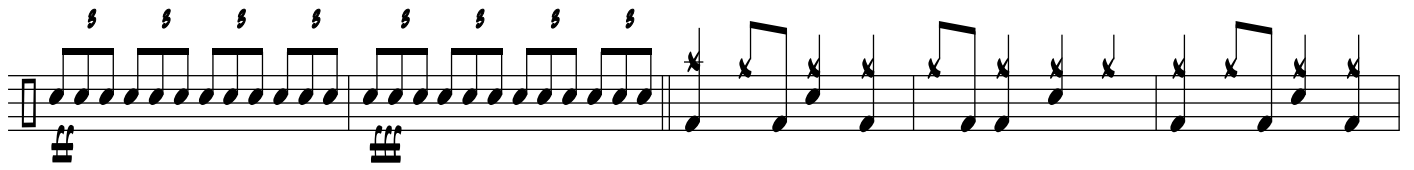
The drum set notation is written on seven staves. The first staff begins with a common time signature (C) and a tempo marking of 120. The notation uses various rhythmic values including eighth and sixteenth notes, rests, and dynamic markings such as accents (>) and slurs. The second staff continues the rhythmic pattern with accents. The third staff features a series of eighth notes with 'x' marks above them, indicating cymbal hits. The fourth staff includes a section with a 2-measure rest, a 7-measure rest, and a 2-measure rest, followed by a triplet of eighth notes. The fifth staff starts with a 2-measure rest, followed by a 7-measure rest, and then triplet eighth notes. The sixth and seventh staves continue with eighth notes and cymbal hits.

© ROB FERRELL DRUM STUDIO 2015

ALL RIGHTS RESERVED

WWW.ROBERTFERRELL.COM





This page of musical notation for guitar consists of ten staves. The notation includes various rhythmic patterns, accidentals, and performance markings such as slurs, accents, and fingerings. The first staff features a complex rhythmic pattern with many sixteenth notes and slurs. The second staff has a series of dotted rhythms followed by a sixteenth-note run with a '5' fingering. The third staff continues with a steady eighth-note pattern. The fourth staff is a simple eighth-note line. The fifth staff shows a change in rhythm with a 7/4 time signature and a repeat sign. The sixth staff features a 3/4 time signature and a repeat sign. The seventh staff includes a double bar line, a '2' marking, and a series of accented sixteenth-note runs. The eighth staff has a series of eighth notes with slurs and accents, and a '5' fingering. The ninth and tenth staves continue with eighth-note patterns.

The image displays ten staves of musical notation for guitar. The notation is written in a standard staff format with a treble clef and a guitar icon at the beginning of each staff. The music consists of various rhythmic patterns, including eighth and sixteenth notes, and rests. There are several slurs and dynamic markings, such as accents (>) and a '3' (triple) marking. The notation is arranged in a vertical sequence of ten staves.

