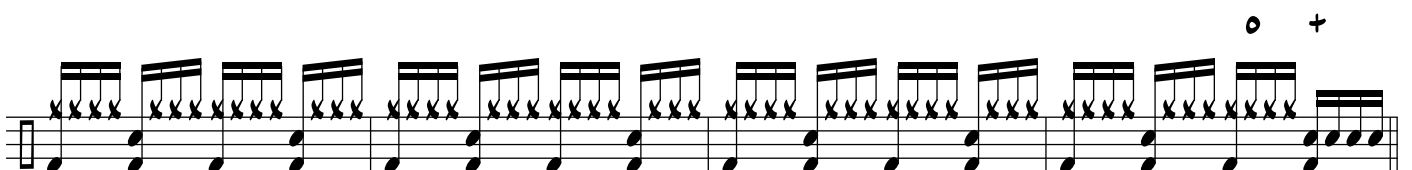
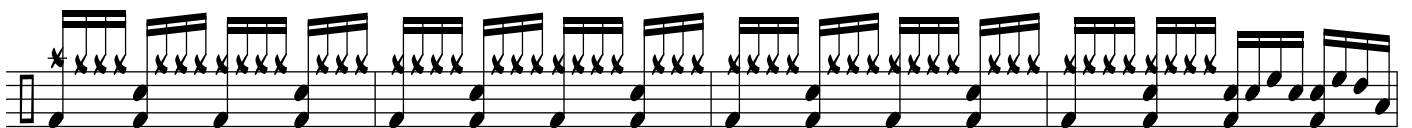
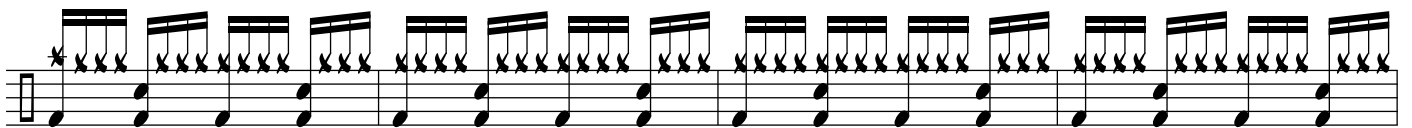
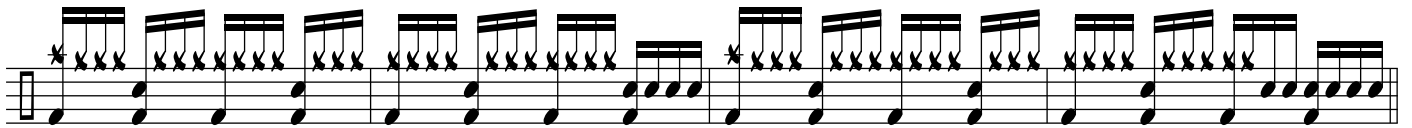
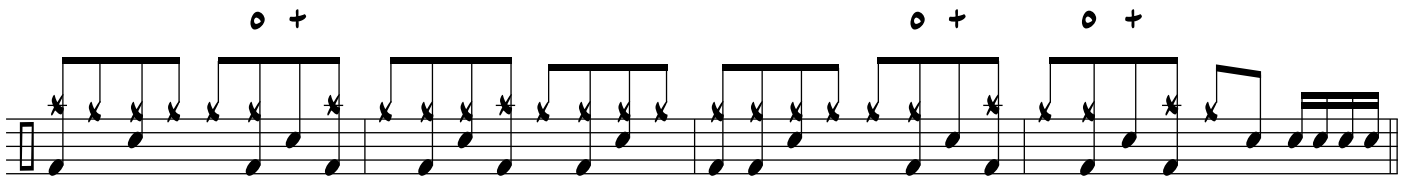
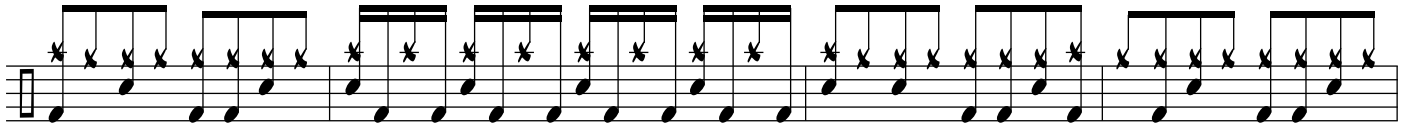
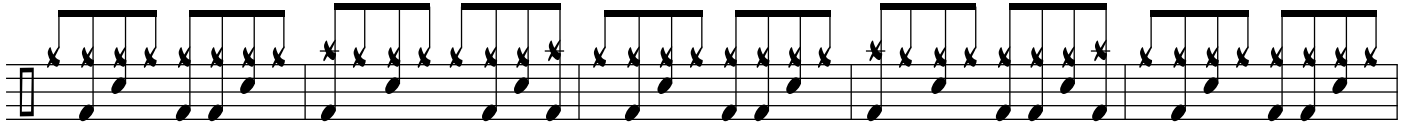
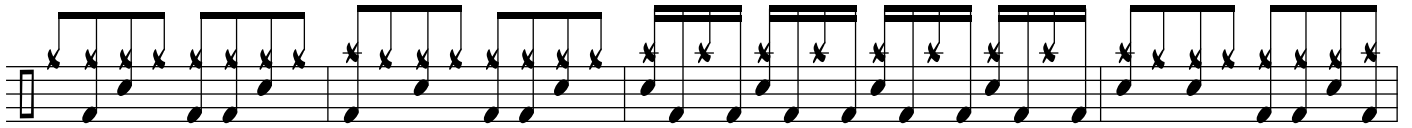


# CRAZY TRAIN

DRUM SET

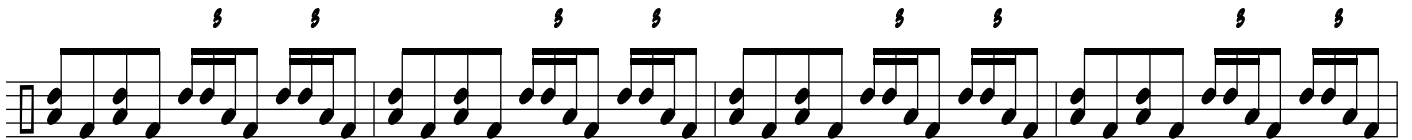
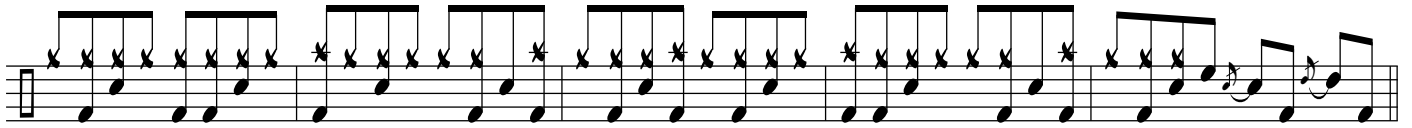
Drum set notation for 'Crazy Train' in common time (C). The notation is spread across seven staves. The first staff begins with a common time signature and a treble clef. The notation uses 'x' for snare and 'o' for cymbal. The second staff includes asterisks (\*) above notes. The third staff also includes asterisks. The fourth staff features a cymbal symbol (o) and a plus sign (+) above notes. The fifth staff is labeled 'REPEAT 3X' and contains a repeat sign. The sixth staff includes a cymbal symbol (o) and a plus sign (+) above notes. The seventh staff concludes the piece with asterisks above notes.

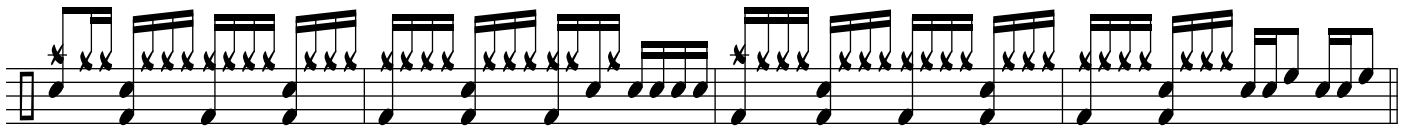




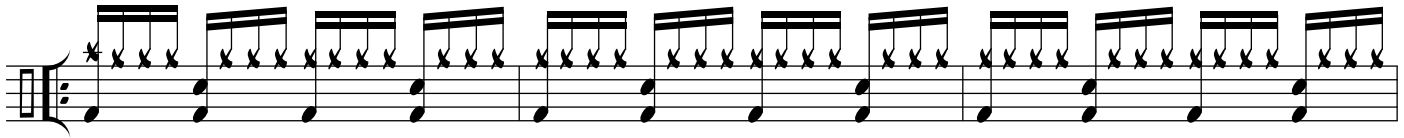
o +

o +

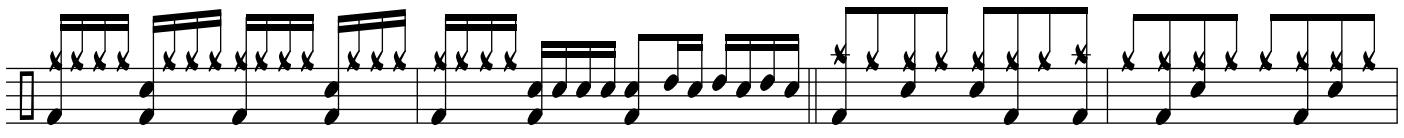
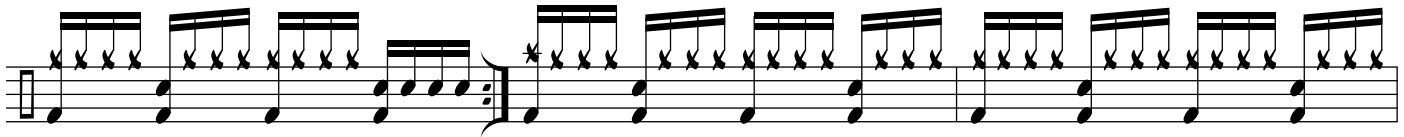




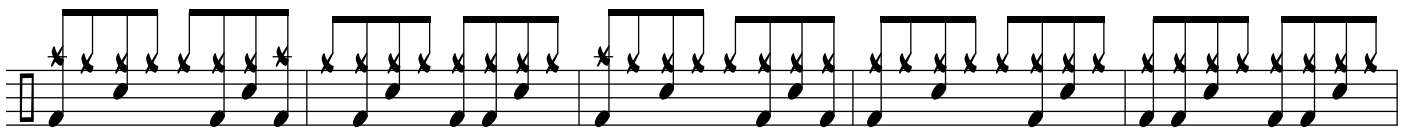
REPEAT 3x



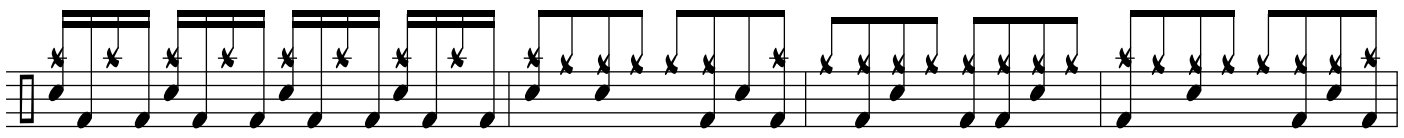
o +



o +

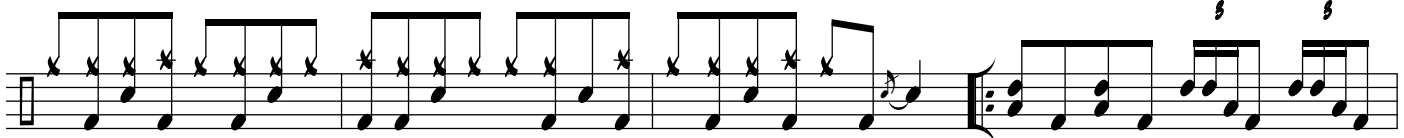


o +



o +

REPEAT & FADE



s

s

s

s

s

s

