

# WHAT I GOT

## DRUM LOOP

## GUITAR

DRUM SET

The first staff of music shows a drum set part on the left and a guitar part on the right. The drum set part is in common time (C) and features a steady 4/4 beat. The guitar part is in 7/8 time and consists of a series of eighth notes with 'x' marks above them, indicating a specific rhythmic pattern.

The second staff continues the drum set and guitar parts from the first staff. The drum set part maintains the 4/4 beat, and the guitar part continues with the eighth note pattern.

5

The third staff continues the drum set and guitar parts. The drum set part maintains the 4/4 beat, and the guitar part continues with the eighth note pattern.

9

The fourth staff continues the drum set and guitar parts. The drum set part maintains the 4/4 beat, and the guitar part continues with the eighth note pattern.

13

The fifth staff continues the drum set and guitar parts. The drum set part maintains the 4/4 beat, and the guitar part continues with the eighth note pattern.

17

## REAL DRUMS

The sixth staff is labeled 'REAL DRUMS' and shows a transition from the drum set part to a more complex drum set part. The guitar part continues with the eighth note pattern.

21

The seventh staff continues the real drums and guitar parts. The drum set part maintains the 4/4 beat, and the guitar part continues with the eighth note pattern.

25

29

33

37

41

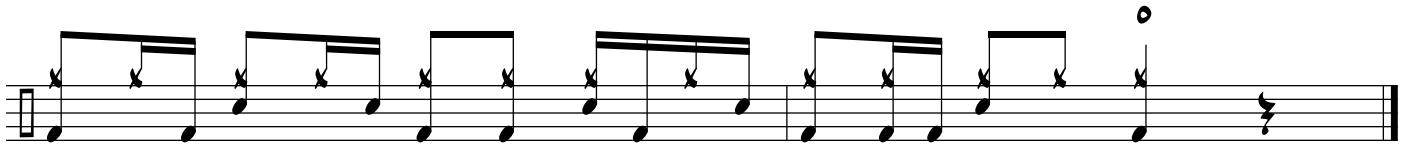
45

49

53

57

61



65