

THESE THINGS

DRUM SET

The first staff of the drum set part is written in 6/8 time. It begins with a treble clef and a 6/8 time signature. The notation consists of a series of eighth notes, with some groups of three eighth notes beamed together. The notes are placed on the first and second lines of the staff.

The second staff of the drum set part continues the rhythmic pattern from the first staff. It features a series of eighth notes, with some groups of three eighth notes beamed together. The notes are placed on the first and second lines of the staff.

5

The third staff of the drum set part continues the rhythmic pattern. It features a series of eighth notes, with some groups of three eighth notes beamed together. The notes are placed on the first and second lines of the staff. A double bar line is present in the middle of the staff.

11

The fourth staff of the drum set part continues the rhythmic pattern. It features a series of eighth notes, with some groups of three eighth notes beamed together. The notes are placed on the first and second lines of the staff.

17

The fifth staff of the drum set part continues the rhythmic pattern. It features a series of eighth notes, with some groups of three eighth notes beamed together. The notes are placed on the first and second lines of the staff.

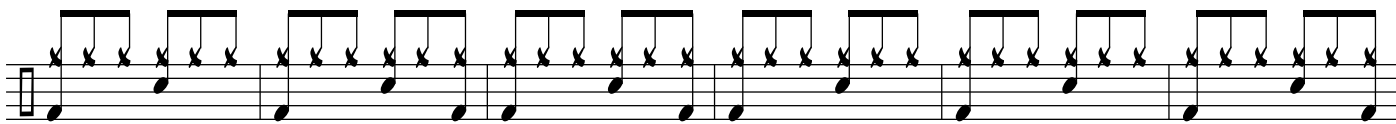
23

The sixth staff of the drum set part continues the rhythmic pattern. It features a series of eighth notes, with some groups of three eighth notes beamed together. The notes are placed on the first and second lines of the staff.

29

The seventh staff of the drum set part continues the rhythmic pattern. It features a series of eighth notes, with some groups of three eighth notes beamed together. The notes are placed on the first and second lines of the staff. A double bar line is present in the middle of the staff.

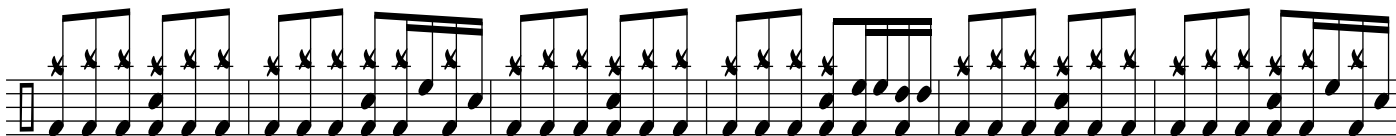
35



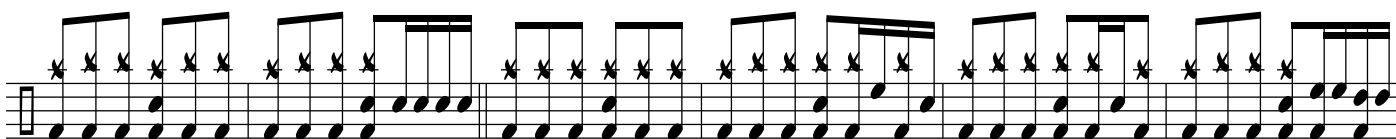
41



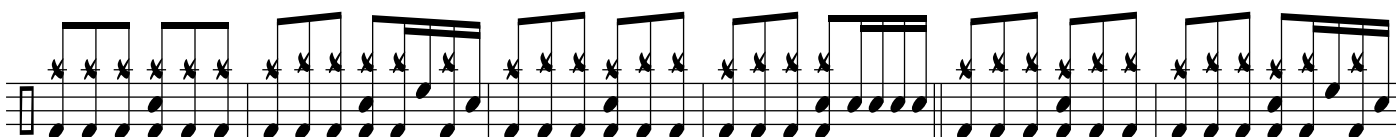
47



53



59



65



71



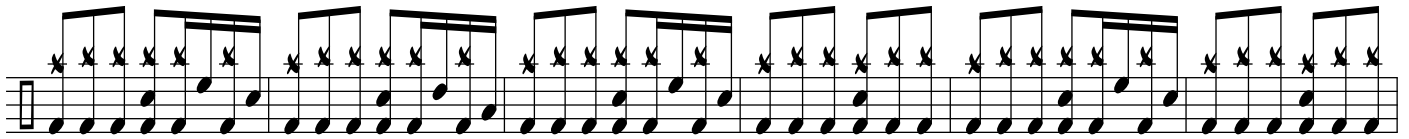
77



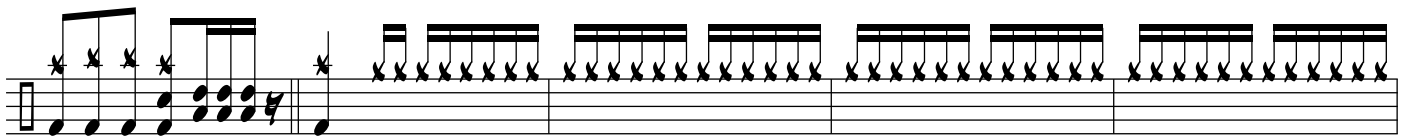
83



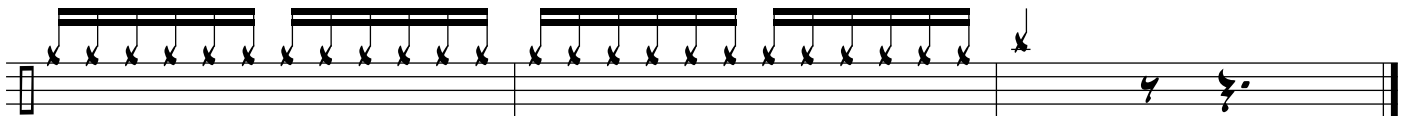
88



94



100



105