

RIPPED

DRUM SET

Musical notation for the first staff of the drum set part, starting with a common time signature (C). It features a series of quarter notes with 'x' marks above them, indicating a specific drum sound.

Musical notation for the second staff of the drum set part, starting at measure 7. It includes eighth notes and sixteenth notes with 'x' marks above them.

7

Musical notation for the third staff of the drum set part, starting at measure 12. It features a complex pattern of eighth and sixteenth notes with 'x' marks above them.

12

Musical notation for the fourth staff of the drum set part, starting at measure 17. It continues the pattern of eighth and sixteenth notes with 'x' marks above them.

17

Musical notation for the fifth staff of the drum set part, starting at measure 22. It features a complex pattern of eighth and sixteenth notes with 'x' marks above them.

22

Musical notation for the sixth staff of the drum set part, starting at measure 27. It includes eighth notes and sixteenth notes with 'x' marks above them.

27

Musical notation for the seventh staff of the drum set part, starting at measure 32. It features a complex pattern of eighth and sixteenth notes with 'x' marks above them.

32



37



42



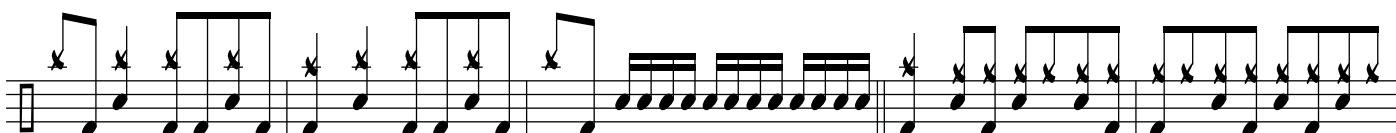
47



52



57



62



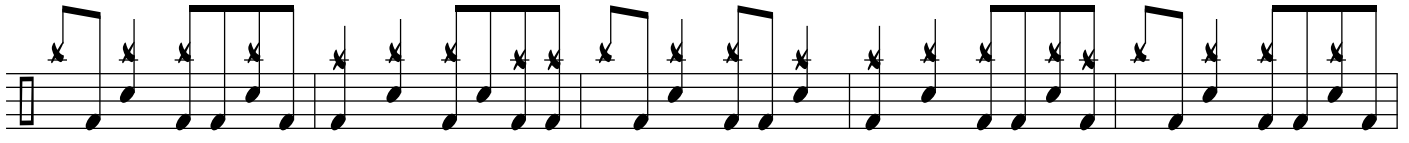
67



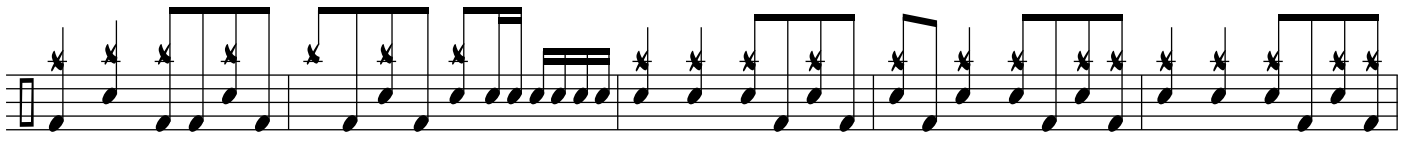
72



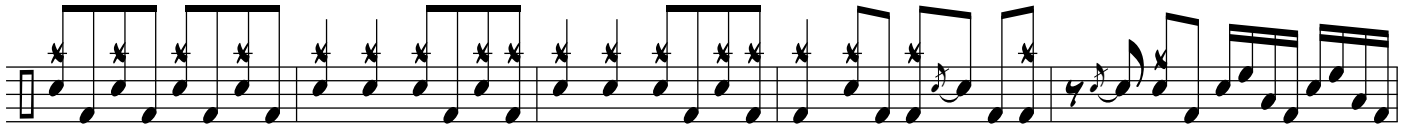
77



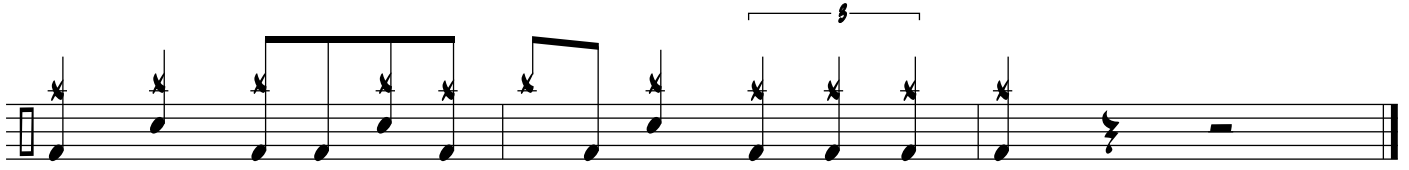
82



87



92



97