

NEW ORLEANS

DRUM SET

3x

The first staff of music is labeled 'DRUM SET' and begins with a common time signature (C). It features a series of eighth notes and quarter notes, with a repeat sign and a 7/8 time signature. The notation includes various rhythmic patterns and accents, with a '3x' marking above the staff.

The second staff of music continues the drum set part with a continuous rhythmic pattern of eighth notes and quarter notes, marked with asterisks to indicate accents.

5

The third staff of music continues the drum set part with a continuous rhythmic pattern of eighth notes and quarter notes, marked with asterisks to indicate accents.

9

The fourth staff of music continues the drum set part with a continuous rhythmic pattern of eighth notes and quarter notes, marked with asterisks to indicate accents.

14

The fifth staff of music continues the drum set part with a continuous rhythmic pattern of eighth notes and quarter notes, marked with asterisks to indicate accents.

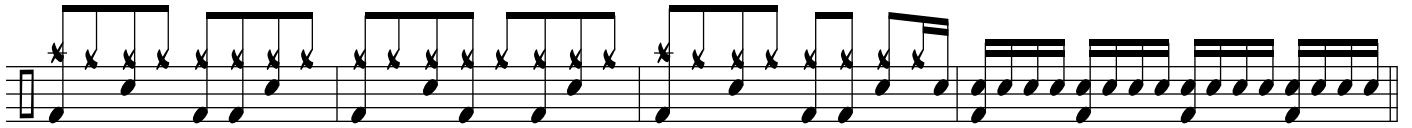
19

The sixth staff of music continues the drum set part with a continuous rhythmic pattern of eighth notes and quarter notes, marked with asterisks to indicate accents.

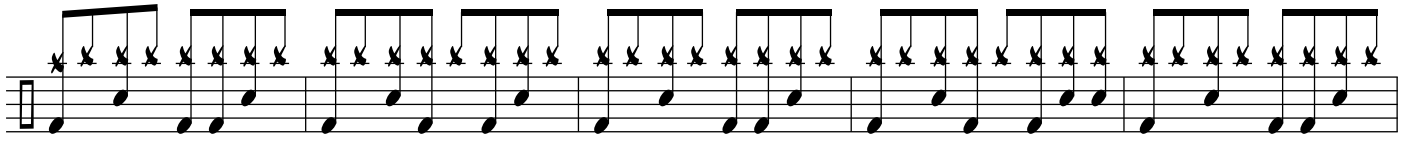
24

The seventh staff of music continues the drum set part with a continuous rhythmic pattern of eighth notes and quarter notes, marked with asterisks to indicate accents.

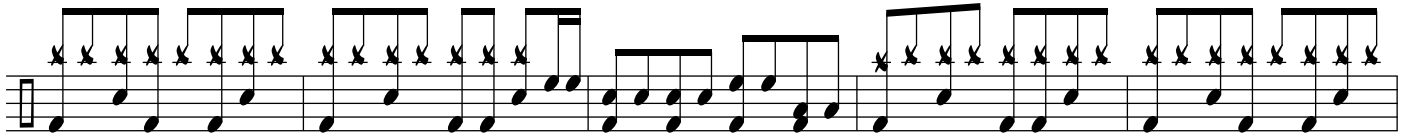
29



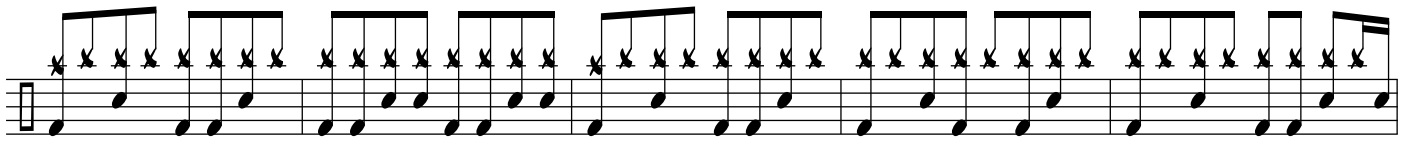
34



38



43



48



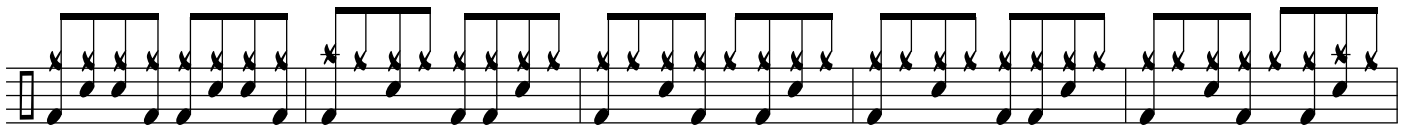
53



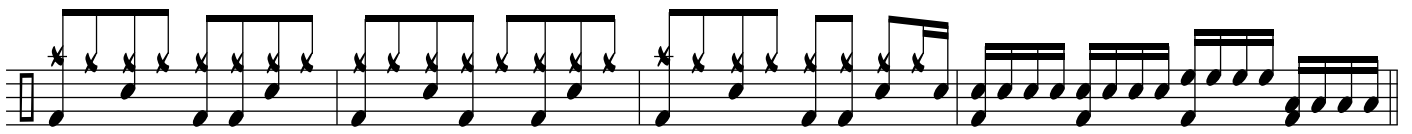
57



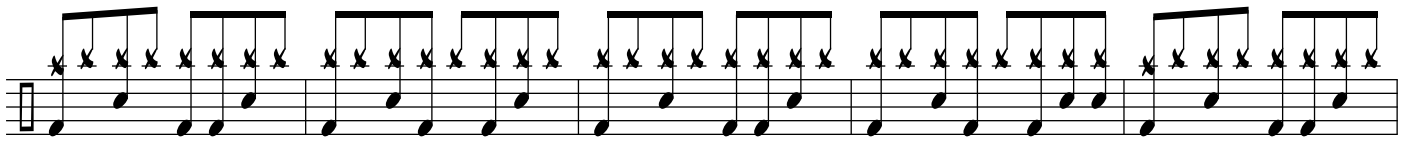
62



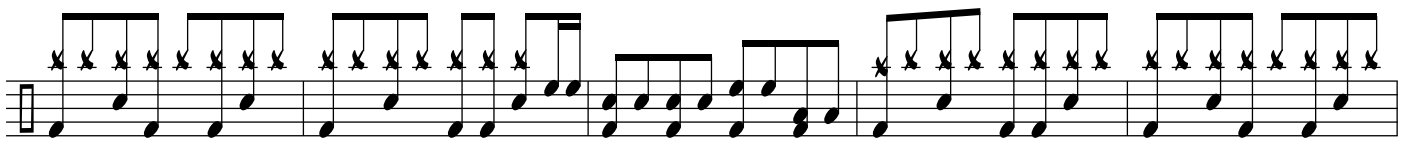
67



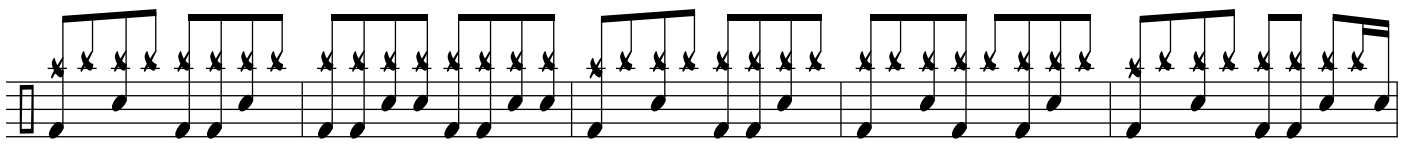
72



76



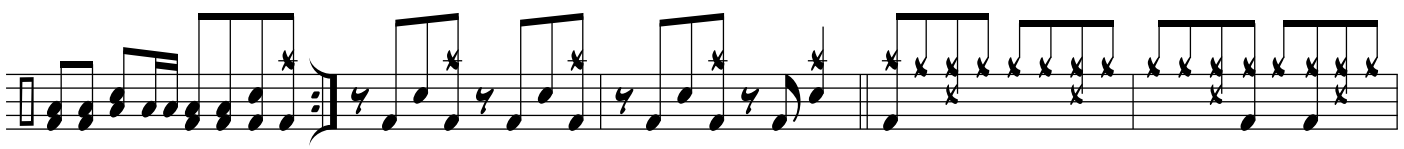
81



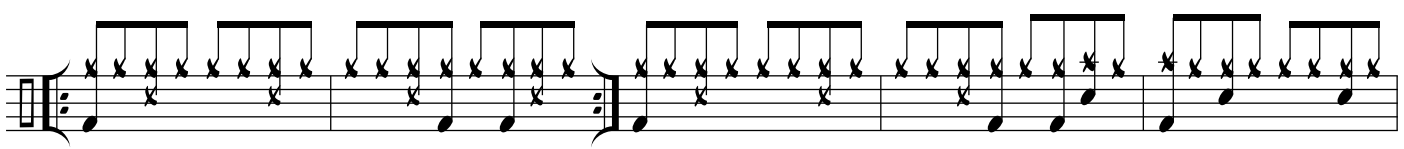
86



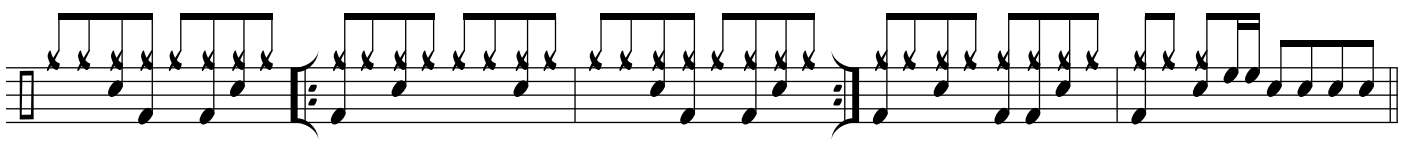
91



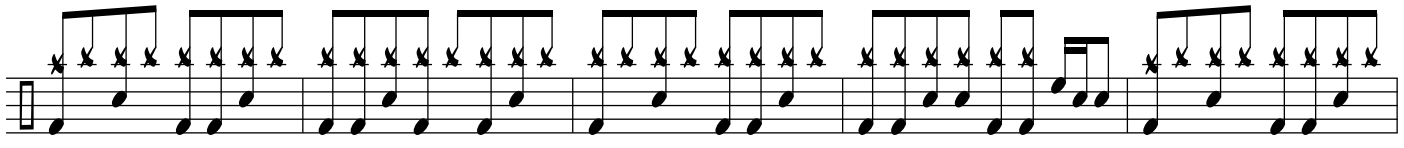
95



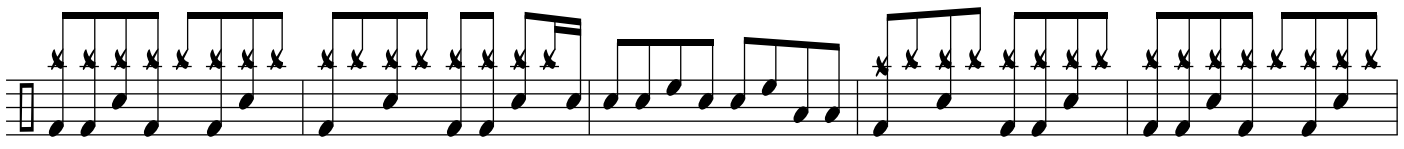
100



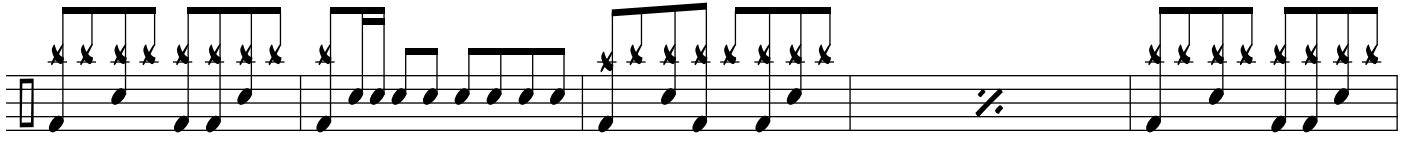
105



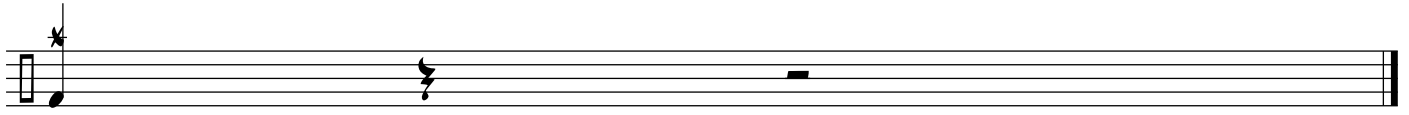
110



115



120



126